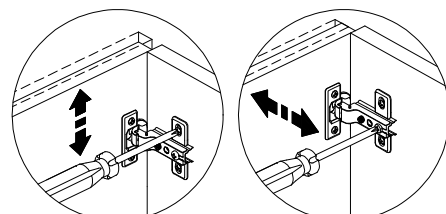
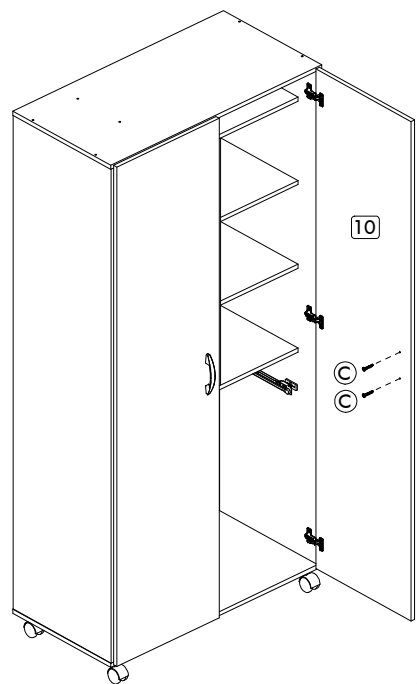
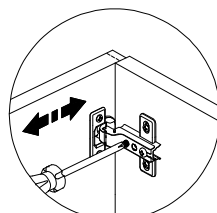


09



Regulagem Vertical  
Ajuste Vertical  
Vertical Adjustment

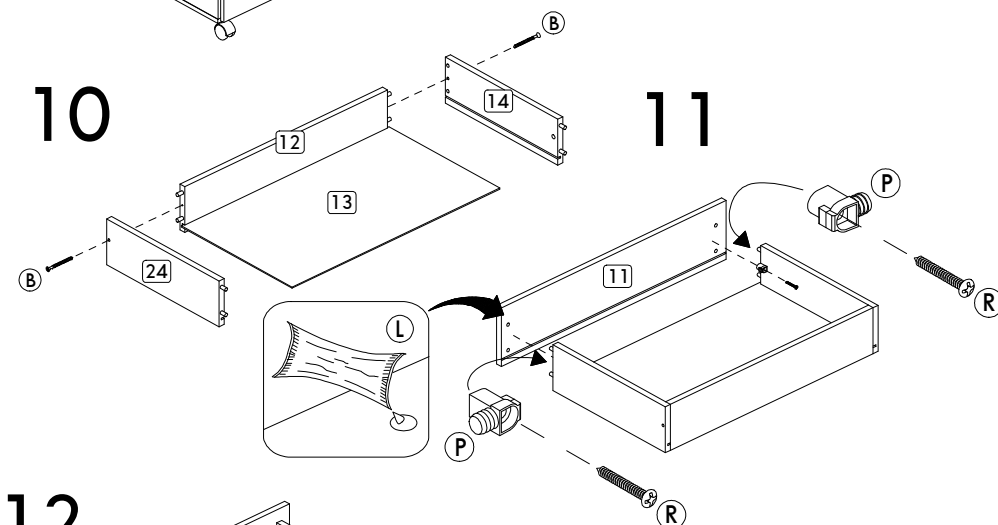
Regulagem Profundidade  
Ajuste Profundidade  
Depth Adjustment



Regulagem Horizontal  
Ajuste Horizontal  
Horizontal Adjustment

10

11



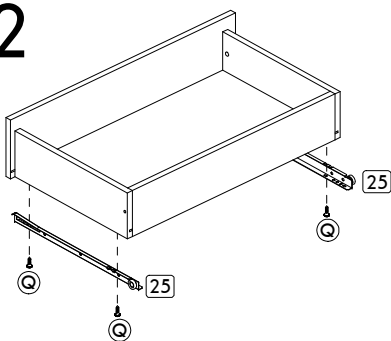
### ATENÇÃO / ATTENTION / ATENCIÓN

Para remover os números impressos nas peças, utilize um pano umedecido em álcool.

To remove the printed numbers on the pieces, use a cloth moistened with alcohol.

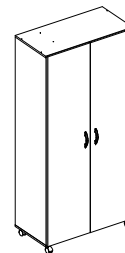
Para remover los números impresos en las piezas, utilice un paño humedecido con alcohol.

12



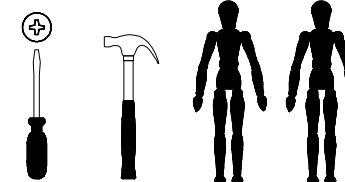
## ARMÁRIO SÃO PAULO

Cabinet São Paulo  
Armario São Paulo



Código 3080 | Revisão 19

Você vai precisar de:  
You will need / Usted necesitará



Ferramentas não inclusas  
Tools not included / Herramientas no incluidas

A		5,0x50	08
B		4,5X45	14
C		4,5X45	04
D		3,5x14	46
E			06
F			02
G			02
H		10x10	55
I			01
J			06
K		08x30	42
L			01
M		6,0x10	04
N			02
P			02

Este produto possui instruções em vídeo para lhe auxiliar na montagem dos acessórios. Acesse o nosso site ou utilize o QR code ao lado para obter mais informações.



This product has video instructions to help you in the assembly of accessories. Visit our website or use the QR code to get more information.

Este producto tiene instrucciones en vídeo para ayudarle en el armado de accesorios. Visite nuestro sitio web o utilice el código QR para obtener más informaciones.

Caso você ainda considere necessária a contratação de um montador, consulte o nosso site. Temos profissionais capacitados para lhe indicar nas principais cidades do Brasil.

Service only available in Brazil. / Servicio disponible sólo en Brasil.

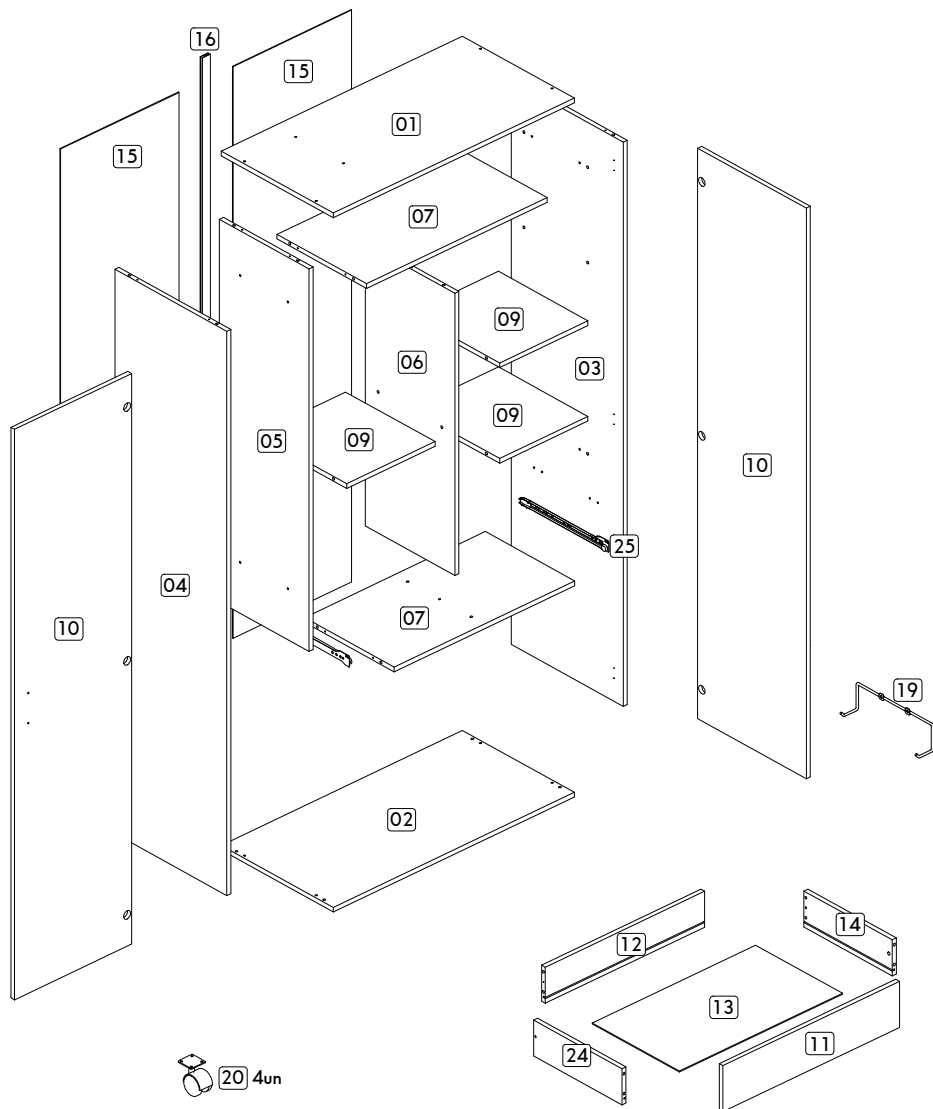
+55 (54) 3458-1300 / sac@politorno.com.br

www.politorno.com.br

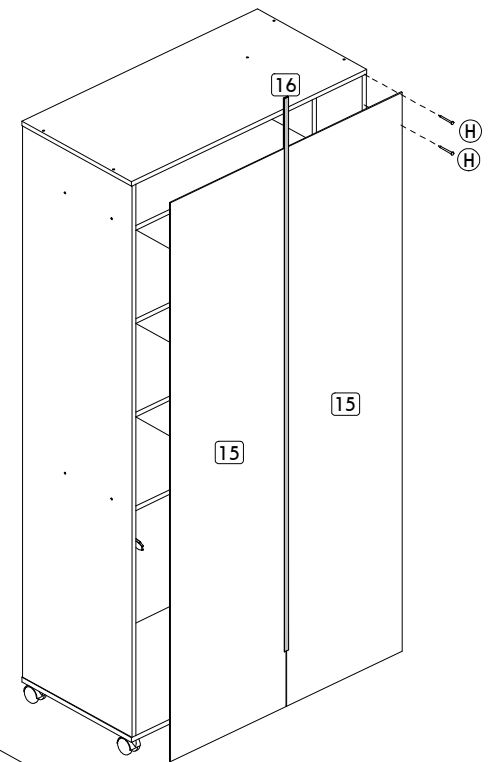
MANUAL DE MONTAGEM  
Assembly instructions / Instrucciones de armado

**Politorno**  
Móveis

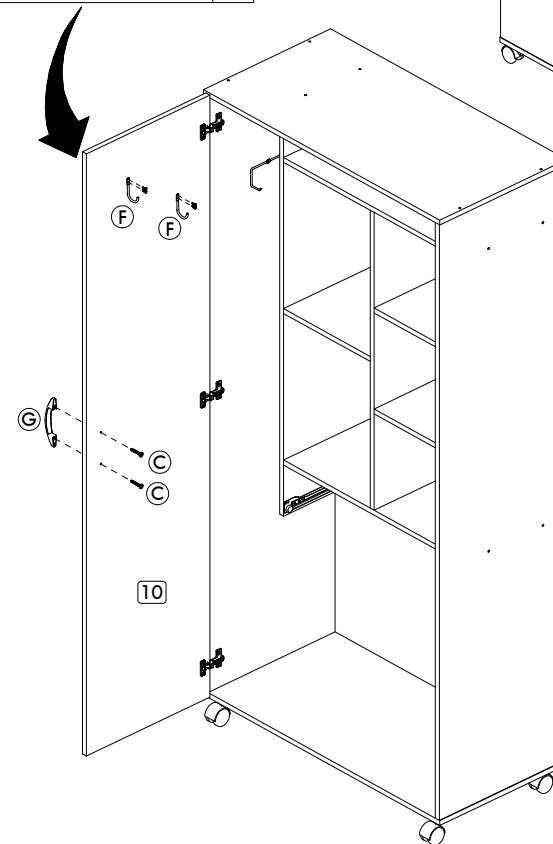
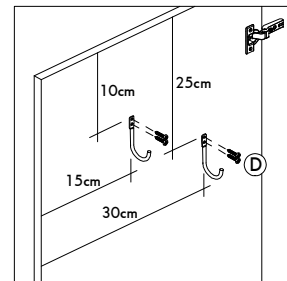
ANTES DE INICIAR A MONTAGEM, IDENTIFIQUE TODAS AS PEÇAS E ACESSÓRIOS.  
 BEFORE STARTING THE ASSEMBLY, IDENTIFY ALL PARTS AND ACCESSORIES.  
 ANTES DE EMPEZAR EL ARMADO, IDENTIFIQUE TODAS LAS PIEZAS Y ACCESORIOS.



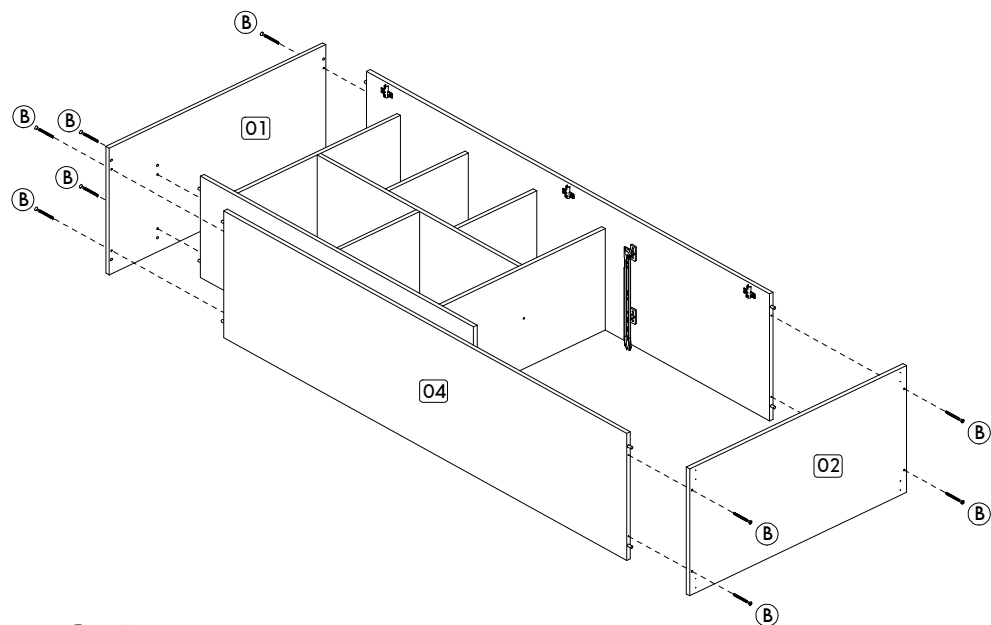
07



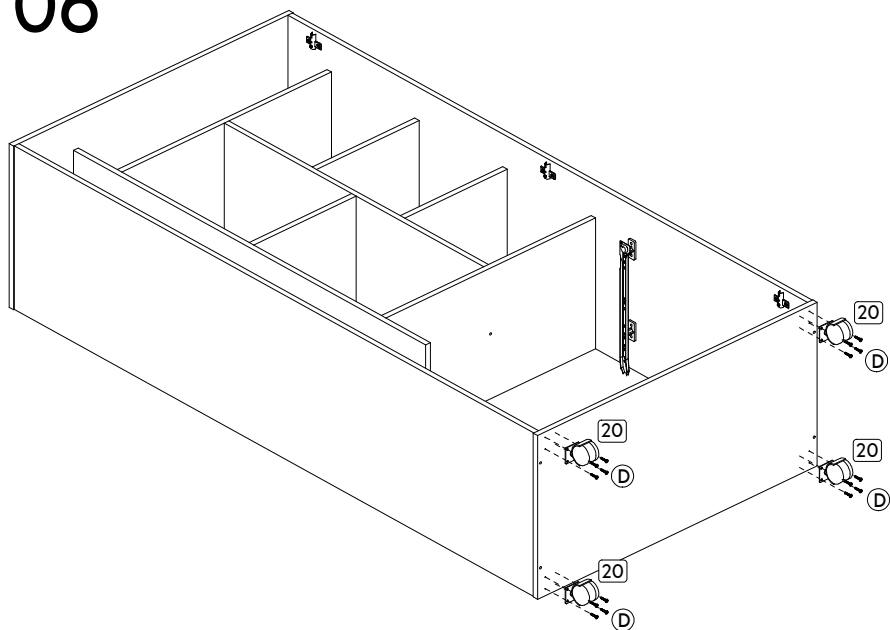
08



05

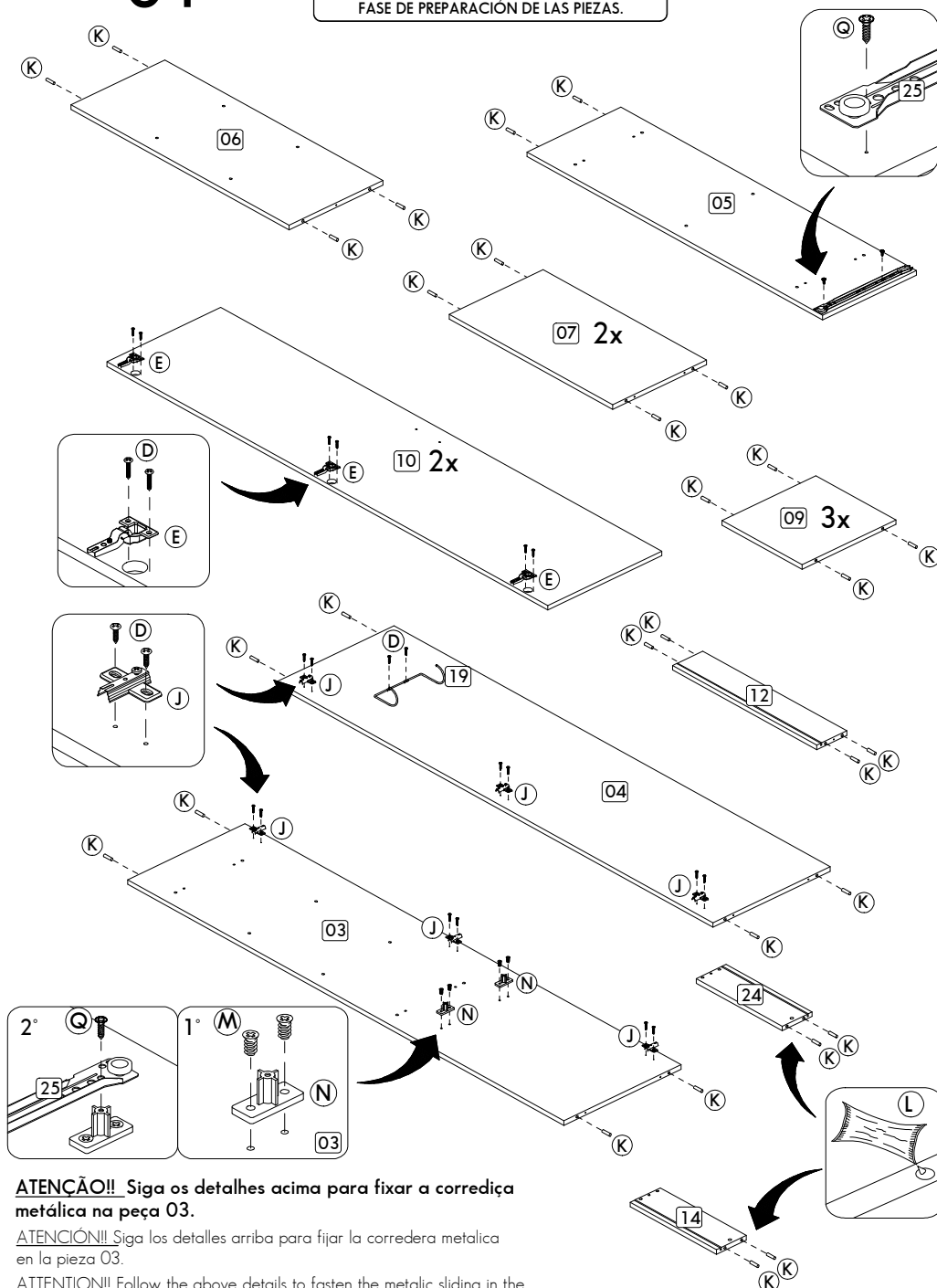


06



# 01

ETAPA DE PREPARAÇÃO DAS PEÇAS.  
STAGE OF PREPARATION OF THE PIECES.  
FASE DE PREPARACIÓN DE LAS PIEZAS.

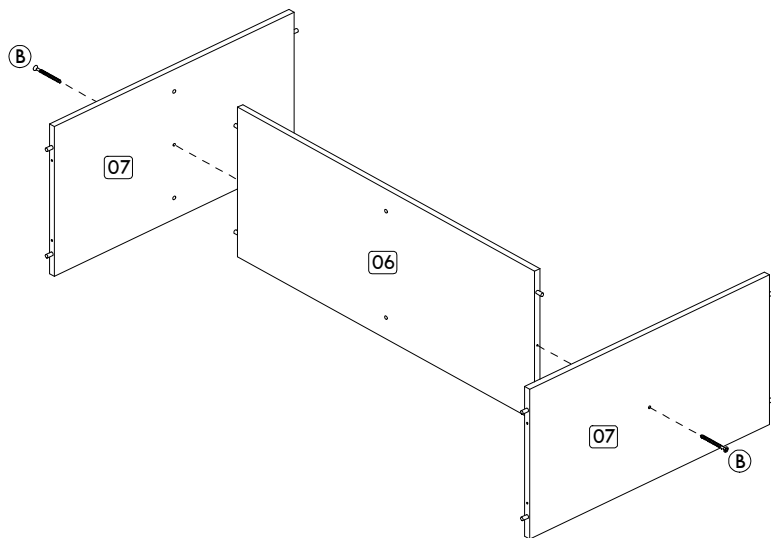


**ATENÇÃO!!** Siga os detalhes acima para fixar a correção metálica na peça 03.

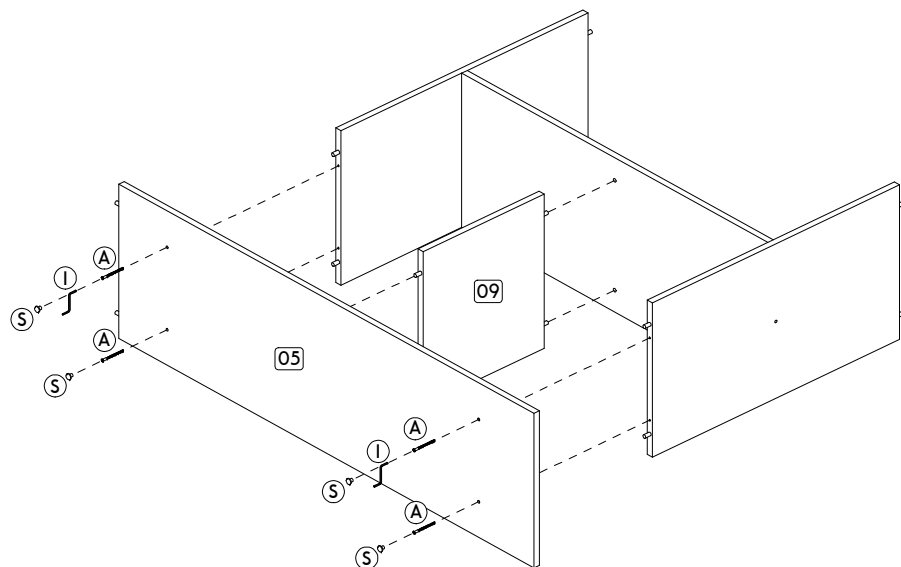
**ATENCIÓN!!** Siga los detalles arriba para fijar la corredera metálica en la pieza 03.

ATTENTION!! Follow the above details to fasten the metallic sliding in the piece 03

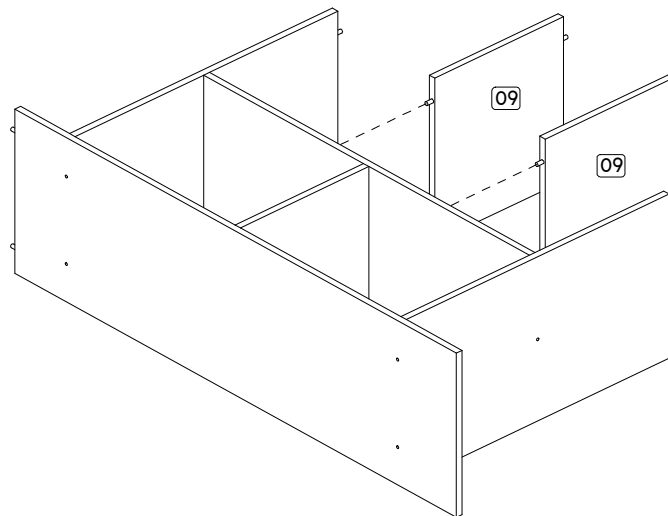
# 01



# 02



# 03



# 04

