

SAMSUNG

USER MANUAL

Gaming Monitor

F24G3*T* F27G3*T*

The colour and the appearance may differ depending on the product, and the specifications are subject to change without prior notice to improve the performance.

The contents of this manual are subject to change without notice to improve quality.

© Samsung

Samsung owns the copyright for this manual.

Use or reproduction of this manual in parts or entirety without the authorization of Samsung is prohibited.

Trademarks other than that of Samsung are owned by their respective owners.

An administration fee may be charged in the following situations:

- (a) An engineer is called out at your request, but it is found that the product has no defect (i.e., where the user manual has not been read).
- (b) You bring the unit to a repair centre, but it is found that the product has no defect (i.e., where the user manual has not been read).

You will be informed of the administration fee amount before a technician visits.

Table of contents

Before Using the Product

| | |
|------------------------------------|---|
| Safety Precautions | 4 |
| Electricity and Safety | 4 |
| Installation | 5 |
| Operation | 6 |
| Cleaning | 8 |
| Correct posture to use the product | 8 |

Preparations

| | |
|---------------------------------------|----|
| Installation | 9 |
| Attaching the Stand | 9 |
| Removing the Stand | 10 |
| Precautions for moving the product | 10 |
| Checking the space around the product | 11 |
| Adjusting the Product | 11 |
| Anti-theft Lock | 12 |
| Wall Mount Kit Specifications (VESA) | 12 |
| Control Panel | 13 |

Connecting and Using a Source Device

| | |
|--|----|
| Read below before connecting the product. | 14 |
| Ports | 14 |
| Connecting and Using a PC | 15 |
| Connection Using the HDMI Cable | 15 |
| Connection Using an HDMI-DVI Cable | 15 |
| Connection Using an DP Cable | 15 |
| Connection Using the D-SUB Cable (Analog Type) | 15 |
| Connecting to headphones or earphones | 15 |
| Connecting the Power | 16 |
| Earphone Holder | 16 |
| Setting Optimum Resolution | 17 |

Menu

| | |
|-----------|----|
| Display | 18 |
| Language | 19 |
| Game mode | 20 |
| Mode | 21 |
| Color | 22 |
| Aspect | 23 |
| Input | 24 |
| Other | 25 |
| Reset | 26 |
| Exit | 26 |

Installing the Software

| | |
|---|----|
| Easy Setting Box | 27 |
| Restrictions and Problems with the Installation | 27 |
| System Requirements | 27 |
| Driver Installation | 27 |

Troubleshooting Guide

| | |
|--|----|
| Requirements Before Contacting Samsung Customer Service Centre | 28 |
| Product diagnosis (Screen issue) | 28 |
| Checking the Resolution and Frequency | 28 |
| Check the following. | 28 |
| Q & A | 30 |

Table of contents

Specifications

| | |
|----------------------------|----|
| General | 31 |
| Standard Signal Mode Table | 33 |

Appendix

| | |
|--|----|
| Responsibility for the Pay Service (Cost to Customers) | 35 |
| Not a product defect | 35 |
| A Product damage caused by customer's fault | 35 |
| Others | 35 |
| FreeSync (for AMD graphics card) | 36 |

Chapter 01

Before Using the Product

Safety Precautions

Warning

A serious or fatal injury may result if instructions are not followed.

Caution

Personal injury or damage to properties may result if instructions are not followed.

CAUTION

RISK OF ELECTRIC SHOCK. DO NOT OPEN.

CAUTION: TO REDUCE THE RISK OF ELECTRIC SHOCK, DO NOT REMOVE COVER (OR BACK). THERE ARE NO USER SERVICEABLE PARTS INSIDE. REFER ALL SERVICING TO QUALIFIED PERSONNEL.



This symbol indicates that high voltage is present inside. It is dangerous to make any kind of contact with any internal part of this product.



AC voltage: Rated voltage marked with this symbol is AC voltage.



This symbol indicates that this product has included important literature concerning operation and maintenance.



DC voltage: Rated voltage marked with this symbol is DC voltage.



Class II product: This symbol indicates that a safety connection to electrical earth (ground) is not required. If this symbol is not present on a product with a mains lead, the product MUST have a reliable connection to protective earth (ground).



Caution. Consult instructions for use: This symbol instructs the user to consult the user manual for further safety related information.

Electricity and Safety

Warning

- Do not use a damaged power cord or plug, or a loose power socket.
- Do not use multiple products with a single power socket.
- Do not touch the power plug with wet hands.
- Insert the power plug all the way in so it is not loose.
- Connect the power plug to a grounded power socket (type 1 insulated devices only).
- Do not bend or pull the power cord with force. Be careful not to leave the power cord under a heavy object.
- Do not place the power cord or product near heat sources.
- Clean any dust around the pins of the power plug or the power socket with a dry cloth.

Caution

- Do not disconnect the power cord while the product is being used.
- Only use the power cord provided with your product by Samsung. Do not use the power cord with other products.
- Keep the power socket where the power cord is connected unobstructed.
 - The power cord must be disconnected to cut off power to the product when an issue occurs.
- Hold the plug when disconnecting the power cord from the power socket.

Installation

Warning

- DO NOT PLACE CANDLES, INSECT REPELLANTS OR CIGARETTES ON TOP OF THE PRODUCT. DO NOT INSTALL THE PRODUCT NEAR HEAT SOURCES.
- Do not install the product in poorly ventilated spaces such as a bookcase or closet.
- Install the product at least 10cm away from the wall to allow ventilation.
- Keep the plastic packaging out of the reach of children.
 - Children may suffocate.
- Do not install the product on an unstable or vibrating surface (insecure shelf, sloped surface, etc.)
 - The product may fall and become damaged and/or cause an injury.
 - Using the product in an area with excess vibration may damage the product or cause a fire.
- Do not install the product in a vehicle or a place exposed to dust, moisture (water drips, etc.), oil, or smoke.
- Do not expose the product to direct sunlight, heat, or a hot object such as a stove.
 - The product lifespan may be reduced or a fire may result.
- Do not install the product within the reach of young children.
 - The product may fall and injure children.
- Edible oil, such as soybean oil, can damage or deform the product. Do not install the product in a kitchen or near a kitchen counter.

Caution

- Do not drop the product while moving.
- Do not set down the product on its front.
- When installing the product on a cabinet or shelf, make sure that the bottom edge of the front of the product is not protruding.
 - The product may fall and become damaged and/or cause an injury.
 - Install the product only on cabinets or shelves of the right size.
- Set down the product gently.
 - Product failure or personal injury may result.
- Installing the product in an unusual place (a place exposed to a lot of fine dust, chemical substances, extreme temperatures or a significant presence of moisture, or a place where the product will operate continuously for an extended period of time) may seriously affect its performance.
 - Be sure to consult Samsung Customer Service Centre if you want to install the product at such a place.
- Before assembling the product, place the product down on a flat and stable surface so that the screen is facing downwards.
 - The product is curved. Placing pressure on the product when on a flat surface may damage the product. When the product is on the ground facing up or down, do not put pressure on it.

Operation

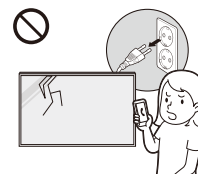
Warning

- There is a high voltage inside the product. Never disassemble, repair or modify the product yourself.
 - Contact Samsung Customer Service Centre for repairs.
- To move the product, first disconnect all the cables from it, including the power cable.
- If the product generates abnormal sounds, a burning smell or smoke, disconnect the power cord immediately and contact Samsung Customer Service Centre.
- Do not let children hang from the product or climb on top of it.
 - Children may become injured or seriously harmed.
- If the product is dropped or the outer case is damaged, turn off the power and disconnect the power cord. Then contact Samsung Customer Service Centre.
 - Continued use can result in a fire or electric shock.
- Do not leave heavy objects or items that children like (toys, sweets, etc.) on top of the product.
 - The product or heavy objects may fall as children try to reach for the toys or sweets resulting in a serious injury.
- During a lightning or thunderstorm, power off the product and remove the power cable.
- Do not drop objects on the product or apply impact.
- Do not move the product by pulling the power cord or any cable.
- If a gas leakage is found, do not touch the product or power plug. Also, ventilate the area immediately.
- Do not lift or move the product by pulling the power cord or any cable.
- Do not use or keep combustible spray or an inflammable substance near the product.
- Ensure the vents are not blocked by tablecloths or curtains.
 - An increased internal temperature may cause a fire.
- Do not insert metallic objects (chopsticks, coins, hairpins, etc) or objects that burn easily (paper, matches, etc) into the product (via the vent or input/output ports, etc).
 - Be sure to power off the product and disconnect the power cord when water or other foreign substances have entered the product. Then contact Samsung Customer Service Centre.
- Do not place objects containing liquid (vases, pots, bottles, etc) or metallic objects on top of the product.
 - Be sure to power off the product and disconnect the power cord when water or other foreign substances have entered the product. Then contact Samsung Customer Service Centre.

Caution

- Leaving the screen fixed on a stationary image for an extended period of time may cause afterimage burn-in or defective pixels.
 - Set the screen to power-saving mode or moving-picture screen saver when not using the product for an extended period of time.
- Disconnect the power cord from the power socket if you do not plan on using the product for an extended period of time (vacation, etc).
 - Dust accumulation combined with heat can cause a fire, electric shock or electric leakage.
- Use the product at the recommended resolution and frequency.
 - Your eyesight may deteriorate.
- Do not put AC/DC adapters together.
- Remove the plastic bag from the AC/DC adapter before you use it.
- Do not let water enter the AC/DC adapter device or get the device wet.
 - An electric shock or fire may result.
 - Avoid using the product outdoors where it can be exposed to rain or snow.
 - Be careful not to get the AC/DC adapter wet when you wash the floor.
- Do not put the AC/DC adapter near to any heating apparatus.
 - Otherwise, a fire may result.
- Keep the AC/DC adapter in a well-ventilated area.
- If you place the AC/DC power adapter hanging with the cord input facing upwards, water or other foreign substances could enter the Adapter and cause the Adapter to malfunction.
Make sure to rest the AC/DC power adapter flat on a table or the floor.

- Do not hold the product upside-down or move it by holding the stand.
 - The product may fall and become damaged or cause an injury.
- Looking at the screen too close for an extended period of time can deteriorate your eyesight.
- Do not use humidifiers or stoves around the product.
- Rest your eyes for more than 5 minutes or look at distance objects for every 1 hour of product use.
- Do not touch the screen when the product has been turned on for an extended period of time as it will become hot.
- Store small accessories out of the reach of children.
- Exercise caution when adjusting the product angle.
 - Your hand or finger may get stuck and injured.
 - Tilting the product at an excessive angle may cause the product to fall and an injury may result.
- Do not place heavy objects on the product.
 - Product failure or personal injury may result.
- When using headphones or earphones, do not turn the volume too high.
 - Having the sound too loud may damage your hearing.
- If there is a problem with the screen, turn off the monitor immediately and contact the service center.



Cleaning

High-glossy models can develop white stains on the surface if an ultrasonic wave humidifier is used nearby.

- Contact your nearest Samsung Customer Service Centre if you want to clean the inside of the product (Service fee will be charged.)

Do not press the product screen with hands or other objects. There is a risk of damaging the screen.

- Exercise care when cleaning as the panel and exterior of advanced LCDs are easily scratched.

Take the following steps when cleaning.

- 1 Power off the product and PC.
- 2 Disconnect the power cord from the product.
 - Hold the power cable by the plug and do not touch the cable with wet hands. Otherwise, an electric shock may result.
- 3 Wipe the product with a clean, soft and dry cloth.

Wet a soft cloth in water, wring it out well, and then use the cloth to wipe the exterior of the product clean.

 - Do not apply a cleaning agent that contains alcohol, solvent, or surfactant to the product.
 - Do not spray water or detergent directly on the product.
- 4 Connect the power cord to the product when cleaning is finished.
- 5 Power on the product and PC.

Correct posture to use the product



Use the product in the correct posture as follows:

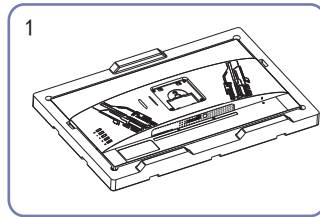
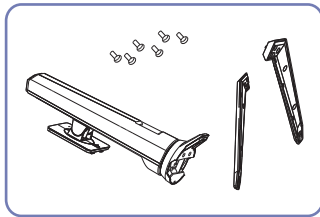
- Straighten your back.
- Allow a distance of 45 to 50cm between your eye and the screen, and look slightly downward at the screen.
- Keep your eyes directly in front of the screen.
- Adjust the angle so light does not reflect on the screen.
- Keep your forearms perpendicular to your upper arms and level with the back of your hands.
- Keep your elbows at about a right angle.
- Adjust the height of the product so you can keep your knees bent at 90 degrees or more, your heels attached to the floor, and your arms lower than your heart.
- Do the Eye exercises or blink frequently, then eye fatigue will be relieved.

Chapter 02

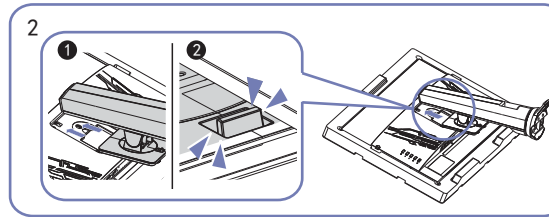
Preparations

Installation

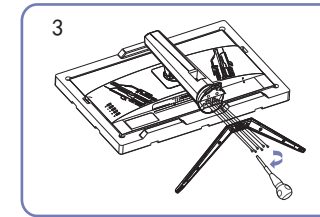
Attaching the Stand (F27G3*T*)



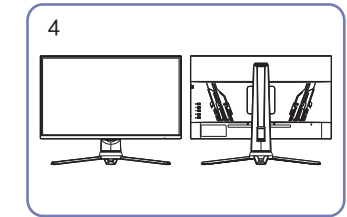
Place the protective Styrofoam (cushion) included in the package on the floor and place the product facing down on the Styrofoam, as shown in the image. If Styrofoam is unavailable, use a thick sitting mat.



Place the stand neck on the display, as shown in the figure. When you place the stand neck, ensure that the two guides on the stand neck can be inserted into the groove of the display. Then press the stand neck downwards until the raise button on the stand neck insert into the groove of the display.

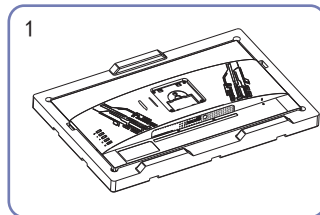
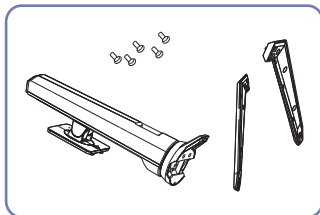


Take out the base and lock it on the bracket with 6 screws as shown in the figure.

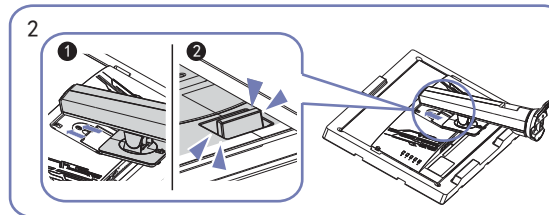


The mounting completes.

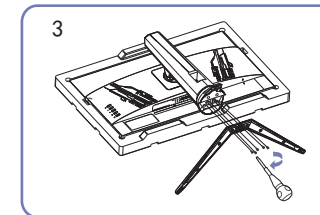
Attaching the Stand (F24G3*T*)



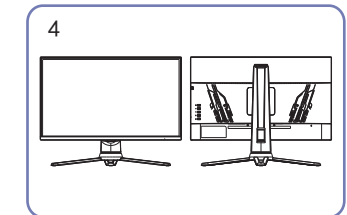
Place the protective Styrofoam (cushion) included in the package on the floor and place the product facing down on the Styrofoam, as shown in the image. If Styrofoam is unavailable, use a thick sitting mat.



Place the stand neck on the display, as shown in the figure. When you place the stand neck, ensure that the two guides on the stand neck can be inserted into the groove of the display. Then press the stand neck downwards until the raise button on the stand neck insert into the groove of the display.



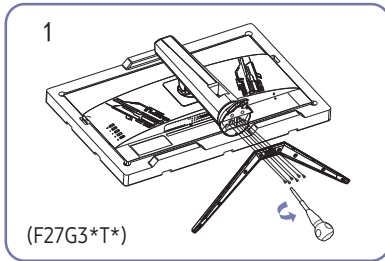
Take out the base and lock it on the bracket with 5 screws as shown in the figure.



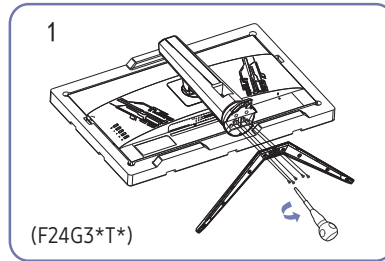
The mounting completes.

Removing the Stand

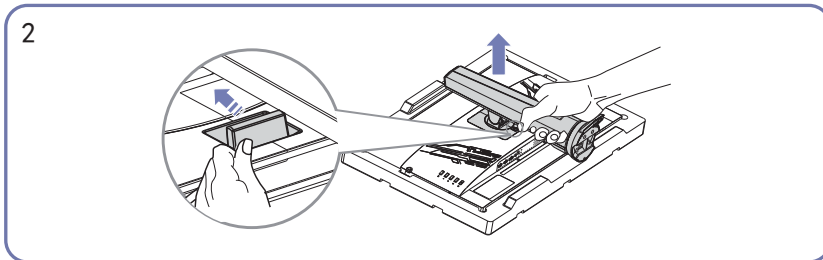
— Before removing the stand from the product, place the product on a flat and stable surface with the screen facing down.



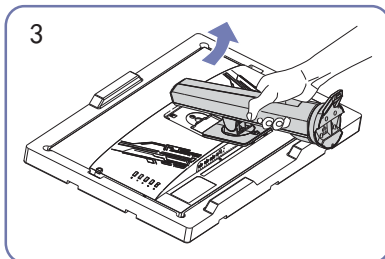
Place the protective Styrofoam (cushion) included in the package on the floor and place the product facing down on the Styrofoam, as shown in the image. If Styrofoam is unavailable, use a thick sitting mat. Remove the 6 screws from the base with a screwdriver as shown in the figure.



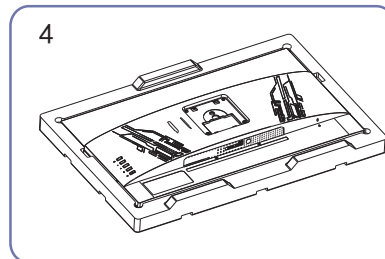
Place the protective Styrofoam (cushion) included in the package on the floor and place the product facing down on the Styrofoam, as shown in the image. If Styrofoam is unavailable, use a thick sitting mat. Remove the 5 screws from the base with a screwdriver as shown in the figure.



Push the key upward and hold.

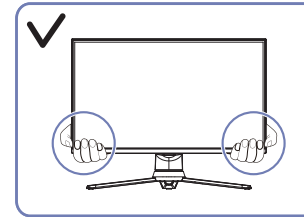


Lift the stand neck in the arrow direction to detach it from the display.

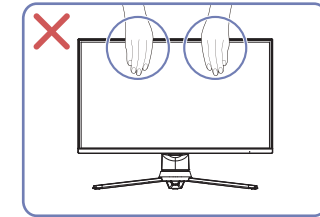


The removing completes.

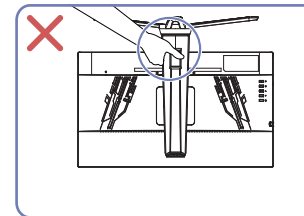
Precautions for moving the product



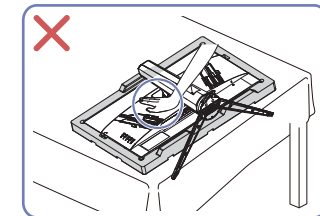
- Hold the lower corners or edges of the product when moving it.



- Do not directly apply pressure on the screen.
- Do not hold the screen when moving the product.



- Do not hold the product upside down only by the stand.

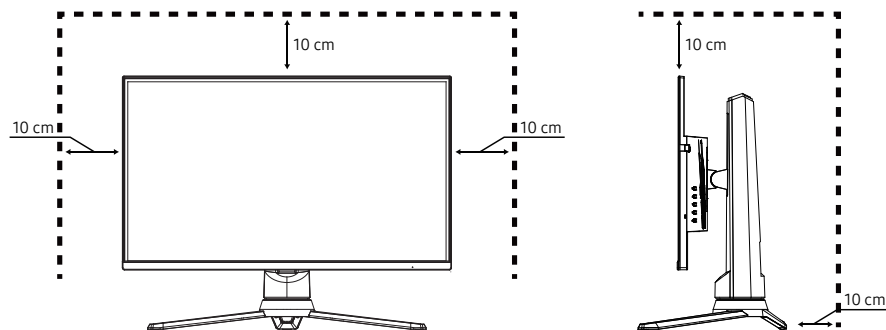


- Do not press down on the product. There is a risk of damaging the product.

Checking the space around the product

Make sure to have enough space for ventilation when placing the product. An internal temperature rise may cause fire and damage the product. Maintain enough space around the product as shown in the diagram when installing the product.

— The exterior may differ depending on the product.

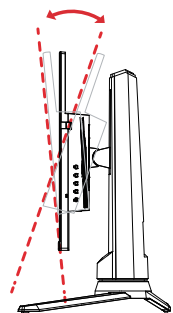


Adjusting the Product

— The colour and shape of parts may differ from what is shown. Specifications are subject to change without notice to improve quality.

Tilt

The tilt of the monitor can be adjusted.
Tilt Angle: $-5.0^{\circ} (\pm 2.0^{\circ}) \sim +20.0^{\circ} (\pm 2.0^{\circ})$

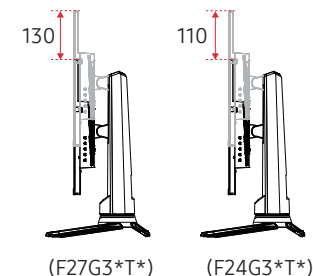


- Hold the bottom of the product for adjustment to avoid load on the product.
- When adjusting the tilt of the product, pay attention to avoid damage caused by surrounding objects and avoid fingers being pinched.

HAS

The height of the monitor can be adjusted.

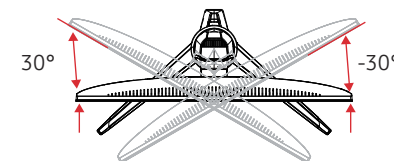
- Up/down adjusting height: 130.0 ± 5.0 (F27G3*T*)
- Up/down adjusting height: 110.0 ± 5.0 (F24G3*T*)
- Slip Up/Down Spec: 5.0mm



- Hold the upper middle of the bracket, adjust as needed and avoid load on the product.
- When adjusting the product HAS, pay attention to avoid damage caused by surrounding objects and avoid fingers being pinched.

Swivel

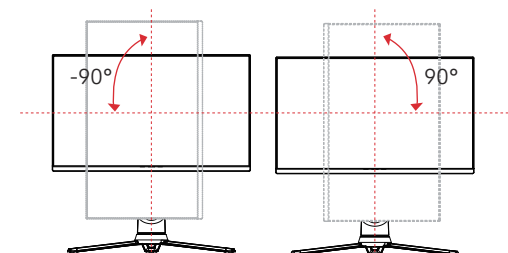
The rotation angle of the monitor can be adjusted.
Swivel Angle: $-30^{\circ} (\pm 2.0^{\circ}) \sim +30.0^{\circ} (\pm 2.0^{\circ})$



- Hold the upper middle of the bracket, adjust as needed and avoid load on the product.
- When adjusting the product swivel, pay attention to avoid damage caused by surrounding objects.

Pivot

The direction of the monitor can be adjusted.
Pivot: $-90^{\circ} (\pm 2.0^{\circ}) \sim +90.0^{\circ} (\pm 2.0^{\circ})$

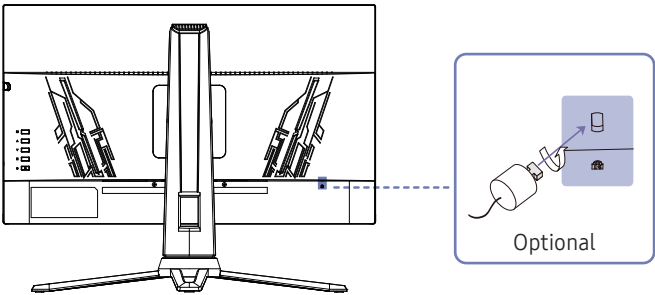


- Hold the upper middle of the bracket, adjust as needed and avoid load on the product.
- When adjusting the product pivot, pay attention to avoid damage caused by surrounding objects. Adjustment should be made when the bracket is in the highest position/tilt back as much as possible.
- Please note that when you adjust the height (lower) when placed vertically, the device may hit the ground and cause an impact, or hit your hand or other objects.

Anti-theft Lock

- An anti-theft lock allows you to use the product securely even in public places.
- The locking device shape and locking method depend on the manufacturer. Refer to the manuals provided with your anti-theft locking device for details.

To lock an anti-theft locking device:

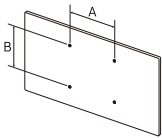


- 1 Fix the cable of your anti-theft locking device to a heavy object such as a desk.
- 2 Put one end of the cable through the loop on the other end.
- 3 Insert the locking device into the anti-theft lock slot at the back of the product.
- 4 Lock the locking device.
 - An anti-theft locking device can be purchased separately.
 - Refer to the manuals provided with your anti-theft locking device for details.
 - Anti-theft locking devices can be purchased at electronics retailers or online.

Wall Mount Kit Specifications (VESA)

- Install your wall mount on a solid wall perpendicular to the floor. Before attaching the wall mount to surfaces other than plaster board, please contact your nearest dealer for additional information. If you install the product on a slanted wall, it may fall and result in severe personal injury. Samsung wall mount kits contain a detailed installation manual and all parts necessary for assembly are provided.
- Do not use screws that are longer than the standard length or do not comply with the VESA standard screw specifications. Screws that are too long may cause damage to the inside of the product.
- When installing the wall mount other than the specified product, its installation may be difficult.
- For wall mounts that do not comply with the VESA standard screw specifications, the length of the screws may differ depending on the wall mount specifications.
- Do not fasten the screws too firmly. This may damage the product or cause the product to fall, leading to personal injury. Samsung is not liable for these kinds of accidents.
- Samsung is not liable for product damage or personal injury when a non-VESA or non-specified wall mount is used or the consumer fails to follow the product installation instructions.
- Do not mount the product at more than a 15 degree tilt.
- Standard dimensions for wall mount kits are shown in the table below.

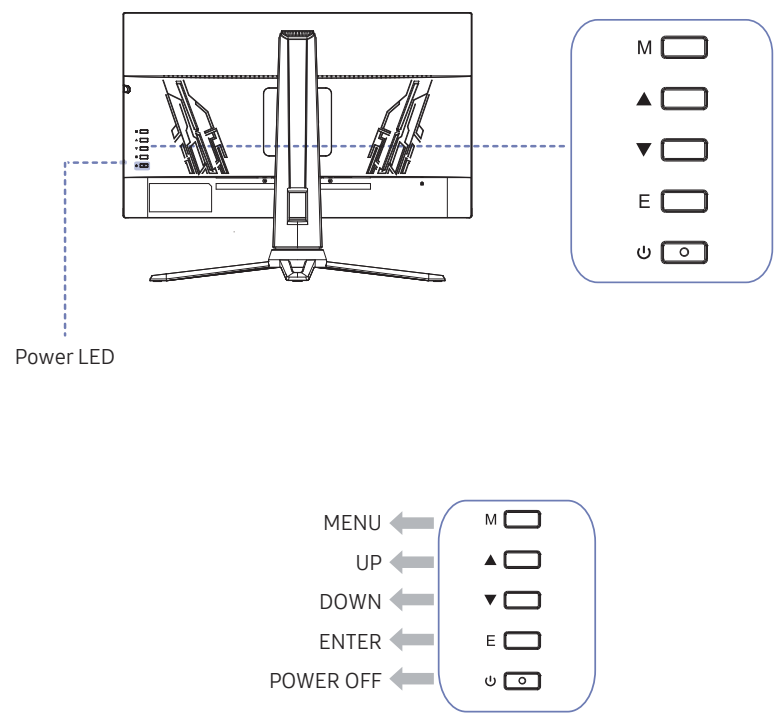
| Model name | VESA screw hole specs (A * B) in millimetres | Standard Screw | Quantity |
|------------|---|------------------------------|----------|
| F27G3*T* | 100.0 x 100.0 | 4.0 mm Φ , 8.0 mm long | 4 EA |
| F24G3*T* | 100.0 x 100.0 | 4.0 mm Φ , 10.0 mm long | 4 EA |



- Do not install your Wall Mount Kit while your product is turned on. It may result in personal injury due to electric shock.

Control Panel

— The colour and shape of parts may differ from what is shown. Specifications are subject to change without notice to improve quality.



| Parts | Description |
|-------------|---|
| Power LED | This LED is power status indicator and works as <ul style="list-style-type: none">Power On (Power button): OnPower saving mode: BlinkingPower Off (Power button): Off <p>— The power Indicator operation can be swapped by changing in the menu. (System → Power LED On) Actual models because of functional variation maybe haven't this function.</p> |
| | |
| | |
| M Menu | Pops up the menu/Backs to the previous menu(in case of main menu, exits from the whole menu). |
| ▲ Up | When menu is opened, as up selection key, the progress bar value will increases. When menu is closed, swich the game front sight. |
| ▼ Down | When menu is opened, as down selection key, progress bar value will decreases; Enter volume setting when the menu is closed. (Not available when VGA signal is input) |
| E Enter | If the menu is activated, press this button to select this function; When the menu is closed, press this button to enter automatic image correction function (for VGA signal only). |
| ⏻ Power Off | Power switch, press this button to turn on/off the power of the monitor. |

Chapter 03

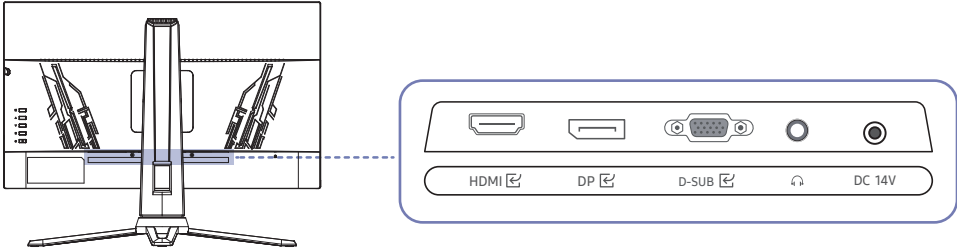
Connecting and Using a Source Device





Read below before connecting the product.

- 1 Before connecting the product, check the shapes of both ports of the supplied signal cables and the shapes and locations of the ports on the product and external device.
 - 2 Before connecting the product, make sure you remove the power cables from both the product and the external device to prevent damage to the product due to a short circuit or over current.
 - 3 After all signal cables have been properly connected, connect the power cables back to the product and the external device.
 - 4 After connecting is completed, make sure you read the manuals to acquaint yourself with the product functions, precautions and other information required to use the product properly.
- Connecting parts may differ in different products.
- Provided ports may vary depending on the product.

Ports

— The functions available may vary depending on the product model. The colour and shape of parts may differ from what is shown. Specifications are subject to change without notice to improve quality. Refer to the actual product.



| Port | Description |
|---|--|
| HDMI  | Connects to a source device using an HDMI cable or HDMI-DVI cable. |
| DP  | Connects to a PC using a DP cable. |
| D-SUB  | Connect to a PC using the D-SUB cable. |
|  | Connect to an audio output device such as headphones or earphones. |
| DC 14V | Connects to the AC/DC adapter. |

Connecting and Using a PC

Select a connection method suitable for your PC.

Connection Using the HDMI Cable



Connection Using an HDMI-DVI Cable



- The audio function is not supported if the source device is connected using the HDMI-DVI cable.
- The optimum resolution may not be available with an HDMI-DVI cable.

Connection Using an DP Cable



- A DP cable shorter under 1.5 m in length is recommended. Using a cable longer than 1.5 m can affect the picture quality.
- Use a VESA certified DP1.2 cable or higher and its gender.

Connection Using the D-SUB Cable (Analog Type)

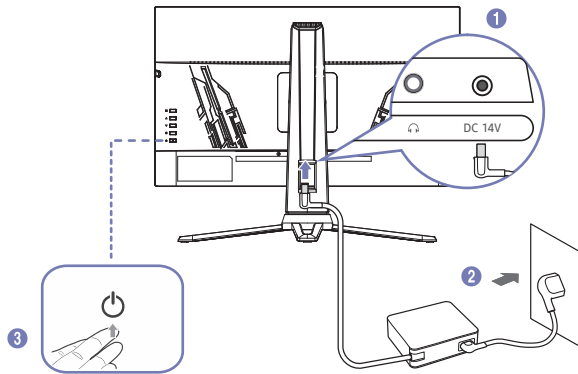



Connecting to headphones or earphones



- Use headphones or earphones when activating sound with an HDMI-HDMI or DP cable.
- The headphones or earphones jack supports only the 3 conductor tip-ring-sleeve (TRS) type.

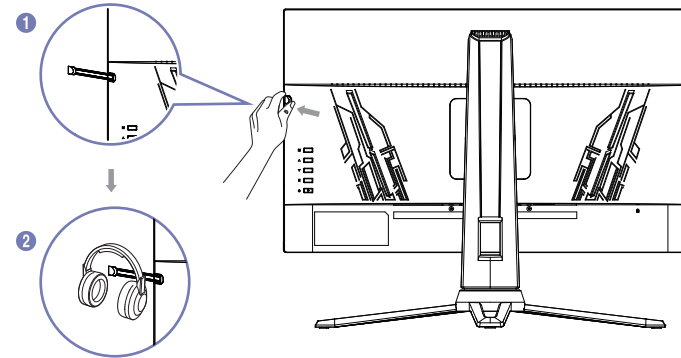
Connecting the Power



- 1 Connect the power cable to the AC/DC adapter. Then, connect the AC/DC adapter to the DC 14V port on the back of the product.
- 2 Next, connect the power cable to the power outlet.
- 3 Press the  button at the bottom of the product to turn it on.

— The input voltage is switched automatically.

Earphone Holder



- 1 Pull out the headphone holder.
- 2 Next, Put the headphones on.

Setting Optimum Resolution

An information message about setting optimum resolution will appear if you power on the product for the first time after purchase.

Select a language on information message and change the resolution on your PC to the optimum setting.

- If you want to set the optimum resolution for your computer, please refer to (Q&A) → [“How can I change the resolution?”](#)
- To enable the maximum refresh rate, set **Refresh Rate** to **144 Hz**.

Chapter 04

Menu

— The functions available may vary depending on the product model. The colour and shape of parts may differ from what is shown. Specifications are subject to change without notice to improve quality.

Display






| 2nd | 3rd | Description |
|----------------|-----|---|
| Brightness | | <p>You can adjust the general brightness of the picture. (Range: 0~100)</p> <p>A higher value will make the picture appear brighter.</p> <p>— This menu is not available when Eye Saver Mode is enabled.</p> |
| Contrast | | <p>Adjust the contrast between the objects and background. (Range: 0~100)</p> <p>A higher value will increase the contrast to make the object appear clearer.</p> <p>— This menu is not available when Picture Mode is set to Cinema or Dynamic Contrast mode.</p> |
| DCR | | <p>Activate dynamic contrast</p> <p>Inactive dynamic contrast</p> |
| Self Diagnosis | | <p>Review the test screen.</p> |



Language

| 2nd | 3rd | Description |
|----------|-----|---|
| Language | | <div>Set the menu language.</div> <div><div>— A change to the language setting will only be applied to the onscreen menu display.</div><div>— It will not be applied to other functions on your PC.</div></div> |

Game mode

| 2nd | 3rd | Description |
|------------------|-----|---|
| OD | | Activate OD function Inactivate OD function |
| Crosshair | |      Select the preferred aim point style. |
| FreeSync Premium | | FreeSync technology is solution that eliminates screen tearing without all the usual lag and latency. FreeSync can be operated when you use AMD's graphic card with supporting FreeSync solution. For more information, see FreeSync (for AMD graphics card) page. |
| MPRT | | Open MPRT Close MPRT The MPRT function will be turned on when the resolution is greater than 85Hz. |
| Timer | | 30 40 50 60 90 Open game timing Close game timing |

Mode

| 2nd | 3rd | Description |
|-----------|-----|---|
| Standard | | <p>This menu provides an optimum picture quality suitable for the environment where the product will be used.</p> <ul style="list-style-type: none">• Standard: Select this mode when the surroundings are bright. |
| Cinema | | <ul style="list-style-type: none">• Cinema: Select this mode when the surroundings are dark. This will save power and reduce eye fatigue. |
| FPS | | <ul style="list-style-type: none">• FPS: Increase the brightness of darker areas of the FPS (First-Person Shooter) game screen. This mode increases visibility of your enemies during a FPS (First-Person Shooter) game. |
| RTS | | <ul style="list-style-type: none">• RTS: Increase the colour temperature and contrast ratio to improve visibility of the RTS (Real-Time Strategy) screen and minimap. |
| Eye Saver | | <ul style="list-style-type: none">• Eye Saver : Set to an optimum picture quality suitable for eye relaxation. |

Color

| 2nd | 3rd | Description |
|------|-----|---|
| | | Adjust the tint of the screen. |
| Cool | | <div>— When the external input is connected through HDMI/DP and PC/AV Mode is set to AV (720P @ 60Hz and 1080P @ 60Hz).</div> |
| Warm | | <div><ul style="list-style-type: none">• Color Tone: Select a colour tone that best suits your viewing needs.<div>— When the external input is connected through HDMI/DP and PC/AV Mode is set to AV (720P @ 60Hz and 1080P @ 60Hz).</div></div> |
| User | | <div><ul style="list-style-type: none">• Red: Adjust the red saturation level. Values closer to 100 mean greater intensity for the colour.• Green: Adjust the green saturation level. Values closer to 100 mean greater intensity for the colour.• Blue: Adjust the blue saturation level. Values closer to 100 mean greater intensity for the colour.</div> |

Aspect

| 2nd | 3rd | Description |
|--------|-----|--|
| Aspect | | <p>Select the best screen size and ratio.</p> <p>— This menu is not available when FreeSync is enabled.</p> <p>In PC mode</p> <ul style="list-style-type: none">• Auto: Display the picture according to the aspect ratio of the input source.• 16:9: Display the picture with an aspect ratio of 16:9.• 4:3: Display the picture with an aspect ratio of 4:3. Suitable for videos and standard broadcasts. |

Input

| 2nd | 3rd | Description |
|-------|-----|--|
| Input | | VGA (Analog) signal input. HDMI (Digital) signal input. Display port (Digital) signal input. |

Other

| 2nd | 3rd | Description |
|-----------|-----|---|
| Off Timer | | Activate the function of timed switch-off. Inactivate the function of timed switch-off. — 4 hours automatic shutdown. |
| Gamma | | Adjust the middle level of luminance. — Gamma 1 / Gamma 2 |
| Volume | | Adjust the Volume controlling the button UP/DOWN. Access the Volume control screen, then increase or decrease the Volume . |
| Adjust | | Auto Adjust : Automatically adjust the horizontal / vertical location focusing and clock of pictures. Auto Color : Adjust the white balance of pictures. Coarse : Adjust the picture clock to reduce vertical line noise . Fine : Adjust the picture phase to reduce horizontal noise . Only for VGA signals. |

Reset

| 2nd | 3rd | Description |
|-------|-----|--|
| Reset | | Return all the settings for the product to the default factory settings. |

Exit

| 2nd | 3rd | Description |
|------|-----|---------------------------|
| Exit | | Exit from the whole menu. |

Chapter 05

Installing the Software

Easy Setting Box



Easy Setting Box enables users to use the product by partitioning multiple sections.

To install the latest version of **Easy Setting Box**, download it from the Samsung website (<http://www.samsung.com>).

- The software may not work properly if you do not restart the PC after the installation.
- The Easy Setting Box icon may not appear depending on the PC system and the product specifications.
- If the shortcut icon does not appear, press the F5 key.

Restrictions and Problems with the Installation

The **Easy Setting Box** installation may be affected by the Graphics Card, Motherboard and the Networking Environment.

System Requirements

| OS | Hardware |
|--|--|
| <ul style="list-style-type: none">• Windows 7 32Bit/64Bit• Windows 8 32Bit/64Bit• Windows 8.1 32Bit/64Bit• Windows 10 32Bit/64Bit | <ul style="list-style-type: none">• At least 32MB of memory• At least 60MB of free space on the hard disk drive |

Driver Installation

To install the latest version of the product driver, download it from the Samsung website (<http://www.samsung.com>).

- You can set the optimum resolution and frequency for this product by installing the corresponding drivers.

Chapter 06

Troubleshooting Guide

Requirements Before Contacting Samsung Customer Service Centre

— Before calling Samsung Customer Service Centre, test your product as follows. If the problem persists, contact Samsung Customer Service Centre.

Product diagnosis (Screen issue)

If a problem occurs with the monitor screen, run [Self Diagnosis](#) to check that the monitor is working properly.

Checking the Resolution and Frequency

If a resolution that is not supported (see the [Standard Signal Mode Table](#)) is selected, the **Out Of Range** message may appear for a short time or the screen may not be displayed properly.

— The displayed resolution may vary, depending on the PC system settings and cables.

Check the following.

Installation issue (PC mode)

The screen keeps switching on and off.

Check the cable connection between the product and PC, and ensure the connectors are locked.

Blank spaces are found on all four sides of the screen when an HDMI or HDMI-DVI cable is connected to the product and PC.

The blank spaces found on the screen have nothing to do with the product.

Blank spaces on the screen are caused by the PC or graphics card. To resolve the problem, adjust the screen size in the HDMI or DVI settings for the graphics card.

If the graphics card settings menu does not have an option to adjust the screen size, update the graphics card driver to the latest version.

(Please contact the graphics card or PC manufacturer for further details about how to adjust the screen settings.)

Screen issue

The power LED is off. The screen will not switch on.

Check that the power cable is connected properly.

If a problem occurs with the monitor screen, run [Self Diagnosis](#) to check that the monitor is working properly.

The message **Check the cable connection and the settings of the source device.** appears.

Check that the cable is properly connected to the product.

If the monitor is in **HDMI** or **DisplayPort** mode, press the button to display the Function Key Guide screen and select the → Input → VGA/HDMI/DisplayPort .

OutOfRange is displayed.

This message appears when the signal from the graphics card exceeds the maximum resolution or frequency for the product.

Change the maximum resolution and frequency to suit the product performance, referring to Standard Signal Mode Table (P.33).

The images on the screen look distorted.

Check the cable connection to the product.

The screen is not clear. The screen is blurry.

Remove any accessories (video extension cable, etc.) and try again.

Set the resolution and frequency to the recommended level.

The screen appears unstable and shaky. There are shadows or ghost images left on the screen.

Check that the resolution and frequency for the PC are within the range of resolution and frequency compatible with the product. Next, if required, change the settings, referring to Standard Signal Mode Table (P.33) in this manual and the **Information** menu on the product.

The screen is too bright. The screen is too dark.

Adjust **Brightness** and **Contrast**.

Screen colour is inconsistent.

Change the **Color** settings.

The colours on the screen have a shadow and are distorted.

Change the **Color** settings.

White does not really look white.

Change the **Color** settings.

There is no image on the screen and the power LED blinks every 0.5 to 1 second.

The product is operating in power-saving mode.

Press any key on the keyboard or move the mouse to return to normal operating mode.

Text is blurry.

If using a Windows OS (e.g. Windows 7, Windows 8, Windows 8.1 or Windows 10): Go to **Control Panel** → **Fonts** → **Adjust ClearType text** and change **Turn on ClearType**.

Video playback is choppy.

Playback of high-definition large video files can be choppy. This may be because the video player is not optimised for the PC resource.

Try playing the file on another video player.

Sound issue

There is no sound.

Re-check the condition of the connected audio cable and/or adjust the volume.

Check the volume.

Check whether audio is set to mute.

The volume is too low.

Adjust the volume.

If the volume is still low after turning it up to the maximum level, adjust the volume on your PC sound card or software programme.

Video is available but there is no sound.

Sound cannot be heard if an HDMI-DVI cable is used to connect the input device.

Connect the device using an HDMI cable or a DP cable.

Source device issue

A beeping sound is heard when my PC is booting.

If a beeping sound is heard when your PC is booting, have your PC serviced.

Q & A

— Refer to the user manual for your PC or graphics card for further instructions on adjustment.

— The path to the settings depends on the installed OS.

How can I change the frequency?

Set the frequency on your graphics card.

- Windows 7: Go to Control Panel → Appearance and Personalization → Display → Screen Resolution → Advanced settings → Monitor, and adjust Screen Refresh Rate under Monitor settings.
- Windows 8(Windows 8.1): Go to Settings → Control Panel → Appearance and Personalization → Display → Screen Resolution → Advanced settings → Monitor, and adjust Refresh rate under Monitor settings.
- Windows 10: Go to Settings → System → Display → Advanced display settings → Display adapter properties → Monitor, and adjust Screen refresh rate under Monitor settings.

How can I change the resolution?

- Windows 7: Go to Control Panel → Appearance and Personalization → Display → Screen Resolution → Adjust Resolution.
- Windows 8(Windows 8.1): Go to Settings → Control Panel → Appearance and Personalization → Display → Adjust Resolution, and adjust the resolution.
- Windows 10: Go to Settings → System → Display → Advanced display settings, and adjust the resolution.

How do I set power-saving mode?

- Windows 7: Go to Control Panel → Appearance and Personalization → Personalization → Screen Saver Settings → Power options or BIOS SETUP on the PC.
 - Windows 8(Windows 8.1): Go to Settings → Control Panel → Appearance and Personalization → Personalize → Screen Saver Settings → Power options or BIOS SETUP on the PC.
 - Windows 10: Go to Settings → Personalization → Lock screen → Screen timeout settings → Power & sleep or BIOS SETUP on the PC.
-

Chapter 07

Specifications

General

| Model Name | F24G3*T* | F27G3*T* |
|--------------------------|---|---------------------------------|
| Size | 24 Class (23.8 Inches / 60.4 cm) | 27 Class (27 Inches / 68.6 cm) |
| Display area | 527.04 mm (H) x 296.46 mm (V) | 597.888 mm (H) x 336.312 mm (V) |
| Pixel Pitch | 0.2745 mm (H) x 0.2745 mm (V) | 0.3114 mm (H) x 0.3114 mm (V) |
| Maximum Pixel Clock | 384 MHz | 384 MHz |
| Power Supply | AC100-240V~ 50/60Hz Based on the AC voltage of the adapter. For the DC voltage of the product, refer to the product label. | |
| Signal connectors | D-SUB, HDMI, DisplayPort | |
| Environmental conditions | Operating Temperature: 10 °C – 40 °C (50 °F – 104 °F) Humidity: 10 % – 80 %, non-condensing Storage Temperature: -20 °C – 45 °C (-4 °F – 113 °F) Humidity: 5% – 95 %, non-condensing | |

- Plug-and-Play
This product can be installed and used with any Plug-and-Play compatible systems. Two-way data exchange between the product and PC system optimises the product settings. Product installation takes place automatically. However, you can customise the installation settings if desired.
- Panel Dots (Pixels)
Due to the nature of the manufacturing of this product, approximately 1 pixel per million (1ppm) may be brighter or darker on the LCD panel. This does not affect product performance.
- The above specifications are subject to change without notice to improve quality.
- For detailed device specifications, visit the Samsung website.
- Flicker Free
The device has no visible or invisible flicker within the range of 0-3000Hz.

-
- To access the EPREL registration of the model:

(1) Go to <https://eprel.ec.europa.eu>

(2) Get the model identifier from the energy label of the product and type it in the search box

(3) Energy Labelling information of the model is shown




* You can directly access the product information via <https://eprel.ec.europa.eu/qr/#####> (registration no.)




The registration no. can be found on the rating label on your product.

Standard Signal Mode Table

| Model Name | | F24G3*T* | F27G3*T* |
|------------------------------|--------------------|----------------------|----------------------|
| Synchronization (PANEL Spec) | Vertical Frequency | 48 - 144 Hz | 48 - 144 Hz |
| Resolution | Optimum resolution | 1920 x 1080 @ 144 Hz | 1920 x 1080 @ 144 Hz |
| | Maximum resolution | 1920 x 1080 @ 144 Hz | 1920 x 1080 @ 144 Hz |

If a signal that belongs to the following standard signal modes is transmitted from your PC, the screen will automatically be adjusted. If the signal transmitted from the PC does not belong to the standard signal modes, the screen may be blank even though the power LED turns on. In such a case, change the settings according to the following table by referring to the graphics card user manual.

| Resolution | Horizontal Frequency (kHz) | Vertical Frequency (Hz) | Pixel Clock (MHz) | Sync Polarity (H/V) | Port | | |
|------------------|-------------------------------|----------------------------|----------------------|------------------------|---|--|--|
| | | | | | D-SUB  | HDMI  | DP  |
| IBM, 720 x 400 | 31.469 | 70.087 | 28.322 | -/+ | 0 | 0 | 0 |
| MAC, 640 x 480 | 35.000 | 66.667 | 30.240 | -/- | 0 | 0 | 0 |
| MAC, 832 x 624 | 49.726 | 74.551 | 57.284 | -/- | 0 | 0 | 0 |
| VESA, 640 x 480 | 31.469 | 59.940 | 25.175 | -/- | 0 | 0 | 0 |
| VESA, 640 x 480 | 37.861 | 72.809 | 31.500 | -/- | 0 | 0 | 0 |
| VESA, 640 x 480 | 37.500 | 75.000 | 31.500 | -/- | 0 | 0 | 0 |
| VESA, 800 x 600 | 35.156 | 56.250 | 36.000 | +/+ | 0 | 0 | 0 |
| VESA, 800 x 600 | 37.879 | 60.317 | 40.000 | +/+ | 0 | 0 | 0 |
| VESA, 800 x 600 | 48.077 | 72.188 | 50.000 | +/+ | 0 | 0 | 0 |
| VESA, 800 x 600 | 46.875 | 75.000 | 49.500 | +/+ | 0 | 0 | 0 |
| VESA, 1024 x 768 | 48.363 | 60.004 | 65.000 | -/- | 0 | 0 | 0 |
| VESA, 1024 x 768 | 56.476 | 70.069 | 75.000 | -/- | 0 | 0 | 0 |
| VESA, 1024 x 768 | 60.023 | 75.029 | 78.750 | +/+ | 0 | 0 | 0 |
| VESA, 1280 x 720 | 45.000 | 60.000 | 74.250 | +/+ | 0 | 0 | 0 |
| VESA, 1280 x 800 | 49.702 | 59.810 | 83.500 | -/+ | 0 | 0 | 0 |

| Resolution | Horizontal Frequency (kHz) | Vertical Frequency (Hz) | Pixel Clock (MHz) | Sync Polarity (H/V) | Port | | |
|-------------------|-------------------------------|----------------------------|----------------------|------------------------|---|--|--|
| | | | | | D-SUB  | HDMI  | DP  |
| VESA, 1280 x 1024 | 63.981 | 60.020 | 108.000 | +/+ | 0 | 0 | 0 |
| VESA, 1280 x 1024 | 79.976 | 75.025 | 135.000 | +/+ | 0 | 0 | 0 |
| VESA, 1440 x 900 | 55.935 | 59.887 | 106.500 | -/+ | 0 | 0 | 0 |
| VESA, 1600 x 900 | 60.000 | 60.000 | 108.000 | +/+ | 0 | 0 | 0 |
| VESA, 1680 x 1050 | 65.290 | 59.954 | 146.250 | -/+ | 0 | 0 | 0 |
| VESA, 1920 x 1080 | 67.500 | 60.000 | 148.500 | +/+ | 0 | 0 | 0 |
| VESA, 1920 x 1080 | 137.280 | 120.000 | 285.540 | +/+ | x | 0 | 0 |
| VESA, 1920 x 1080 | 166.600 | 144.000 | 333.210 | +/+ | x | 0 | 0 |

Horizontal Frequency

The time required to scan a single line from the left to the right side of the screen is called a horizontal cycle. The reciprocal number of a horizontal cycle is called horizontal frequency. Horizontal frequency is measured in kHz.

Vertical Frequency

Repeating the same picture dozens of times per second allows you to view natural pictures. The repeat frequency is called "vertical frequency" or "refresh rate" and is indicated in Hz.

This product can be set to only one resolution for each screen size to obtain the optimum picture quality due to the nature of the panel. Using a resolution other than the specified resolution may degrade the picture quality. To avoid this, it is recommended that you select the optimum resolution specified for your product.

Chapter 08

Appendix

Responsibility for the Pay Service (Cost to Customers)

— When the service is requested, in spite of in warranty, we may charge you for a visit from a service technician in the following cases.

Not a product defect

Cleaning of the product, Adjustment, Explanation, Re-installation and etc.

- If a service technician is requested to give instructions on how to use product or simply adjusts options without disassembling product.
- If a defect is caused by external environmental factors (Internet, Antenna, Wired Signal, etc.)
- If a product is reinstalled or devices are connected additionally after installing the purchased product for the first time.
- If a product is reinstalled to move to a different spot or to move to a different house.
- If the customer requests instructions on how to use another company's product.
- If customer requests instructions on how to use the network or another company's programme.
- If customer requests software installation and setup for the product.
- If a service technician removes/cleans dusts or foreign materials inside of the product.
- If customer requests an installation additionally after purchasing a product through home-shopping or online.

A Product damage caused by customer's fault

Product damage caused by customer's mishandling or wrong repair

If a product damage is caused by;

- External impact or drop.
- Use of supplies or separately sold product unspecified by Samsung.
- Repair from a person besides an engineer of outsourcing service company or partner of Samsung Electronics Co., Ltd.
- Remodeling or repairing the product by customer.
- Using it with incorrect voltage or non-authorised electrical connections.
- Not following the "cautions" in User Manual.

Others

- If product fails by natural disaster. (lightning, fire, earthquake, flood damage, etc)
- If consumable components are all used up. (Battery, Toner, Fluorescent lights, Head, Vibrator, Lamp, Filter, Ribbon, etc.)

— If customer requests a service in case the product has no defect, service fee may be charged. So please read User Manual first.

FreeSync (for AMD graphics card)

FreeSync technology is solution that eliminates screen tearing without all the usual lag and latency. This feature will eliminate screen tearing and lag during game play. Improve your gaming experience. The displayed **FreeSync** menu items on the monitor may vary, depending on the monitor model and compatibility with the AMD graphics card.

- **Off**: Disable **FreeSync**.
- **On**: Turn on the AMD graphics cards' **FreeSync** function. You may experience intermittent flickers when playing some games.

Apply the optimum resolution when using **FreeSync**.

The refresh rate setting method please refer to Q & A → How can I change the frequency?

- The **FreeSync** function is only enabled in **HDMI** or **DisplayPort** mode.
Use the HDMI/DP cable provided by the manufacturer when using **FreeSync**.
- If the **FreeSync** function is in use and the text displayed on the PC screen looks blurry or corrupted, resolve the issue by changing the resolution of the PC screen to the recommended resolution.
- If the **DisplayPort Ver.** is set to **1.1**, the **FreeSync** mode is disabled.

If you use the **FreeSync** function while playing a game, the following symptoms may occur:

- The screen may flicker depending on the type of graphics card, the game option settings, or the video being played. Try the following actions: decrease the game setting values, change the current **FreeSync** mode to **Off**, or visit the AMD website to check your graphics driver's version and update it with the latest one.
- While you are using the **FreeSync** function, the screen may flicker due to variation of the output frequency from the graphics card.
- The response rate during the game may fluctuate depending on the resolution. A higher resolution generally decreases the response rate.
- The sound quality of the monitor may be degraded.

-
- If you encounter any issues when using the function, contact the Samsung Service Centre.
 - If you change the screen resolution while the function is **On**, the screen may intermittently blank out due to the graphic card. Set **FreeSync** to **Off** and change the resolution.
 - The function is unavailable in the devices (e.g. AV devices) that have no AMD graphic card. If the function is applied, the screen may have malfunction.

The models in the Graphics Cards list supports FreeSync

FreeSync can only be used with specific AMD graphics card models. Refer to the following list for supported graphics cards:

Make sure to install the latest official graphics drivers from AMD that support **FreeSync**.

- For additional AMD graphics card models that support the **FreeSync** feature, visit the official AMD website.
- Select **FreeSync Off** if you are using a graphics card from a different manufacturer.
- When applying the **FreeSync** function via the HDMI cable, it may fail to work due to the bandwidth limitation of certain AMD graphics card.

- | | |
|---|---|
| • Radeon™ RX Vega series | • Radeon™ Pro Duo (2016 edition) |
| • Radeon™ RX 500 series | • Radeon™ R9 Nano series |
| • Radeon™ RX 400 series | • Radeon™ R9 Fury series |
| • Radeon™ R9/R7 300 series (excluding R9 370/X, R7 370/X, R7 265) | • Radeon™ R9/R7 200 series (excluding R9 270/X, R9 280/X) |